

Design Foundation Piecing Patterns in EQ7, Lesson 4 , (Chapter/A) by Werner Taesler, 09-2013

- A direct approach for opening a project and work with the CUSTOM SET Layout.

Note: Each paragraph refers to My Lessons 1 -3 and the Chapter and pages of the **EQ7 Manual** with more options for advanced users.

1. Download the EQ7 project "My Exercise A4.PJ7"

by clicking the **Project Picture** in the **September 2013 Newsletter** with a link to my website



1.1 Save the Project

Reference: Chapter 1, Page 21

click on **Save Button** on the Menu Bar



2. Making a CUSTOM SET Quilt

Reference: EQ7 Manual Chapter5, Page 92

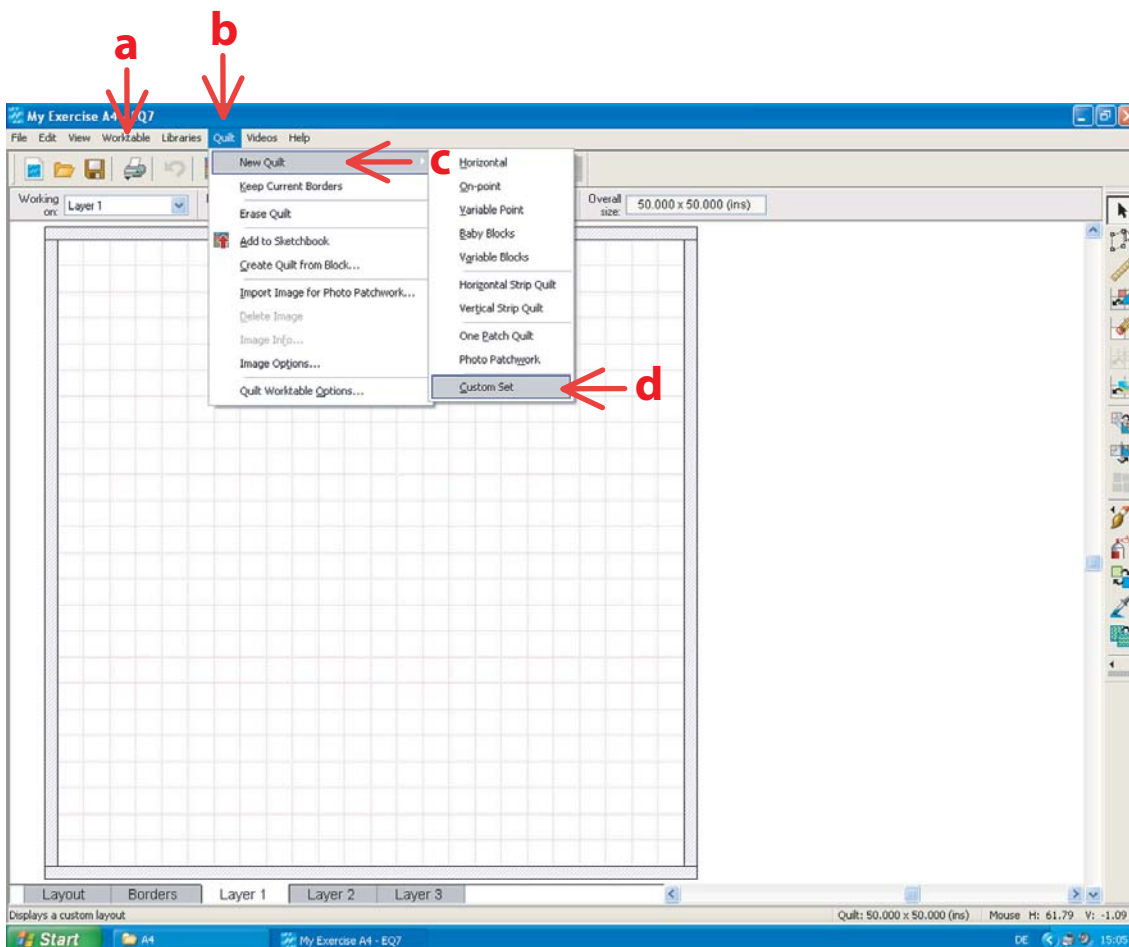
click **a** on the Menu Bar - **Worktable**, choose **Work on Quilt**



click **b** on the Menu Bar - **Quilt**

click **c** on **New Quilt**

click **d** on **Custom Set**



2.1 Working with Quilt Snap Settings

Reference: EQ7 Manual Chapter5, Page 102...

You are on **the Layer 1** Worktable

click **a** on **Show Grid**

click **b** on **Snap block positions to grid**

click **c** on the **Quilt Worktable options**

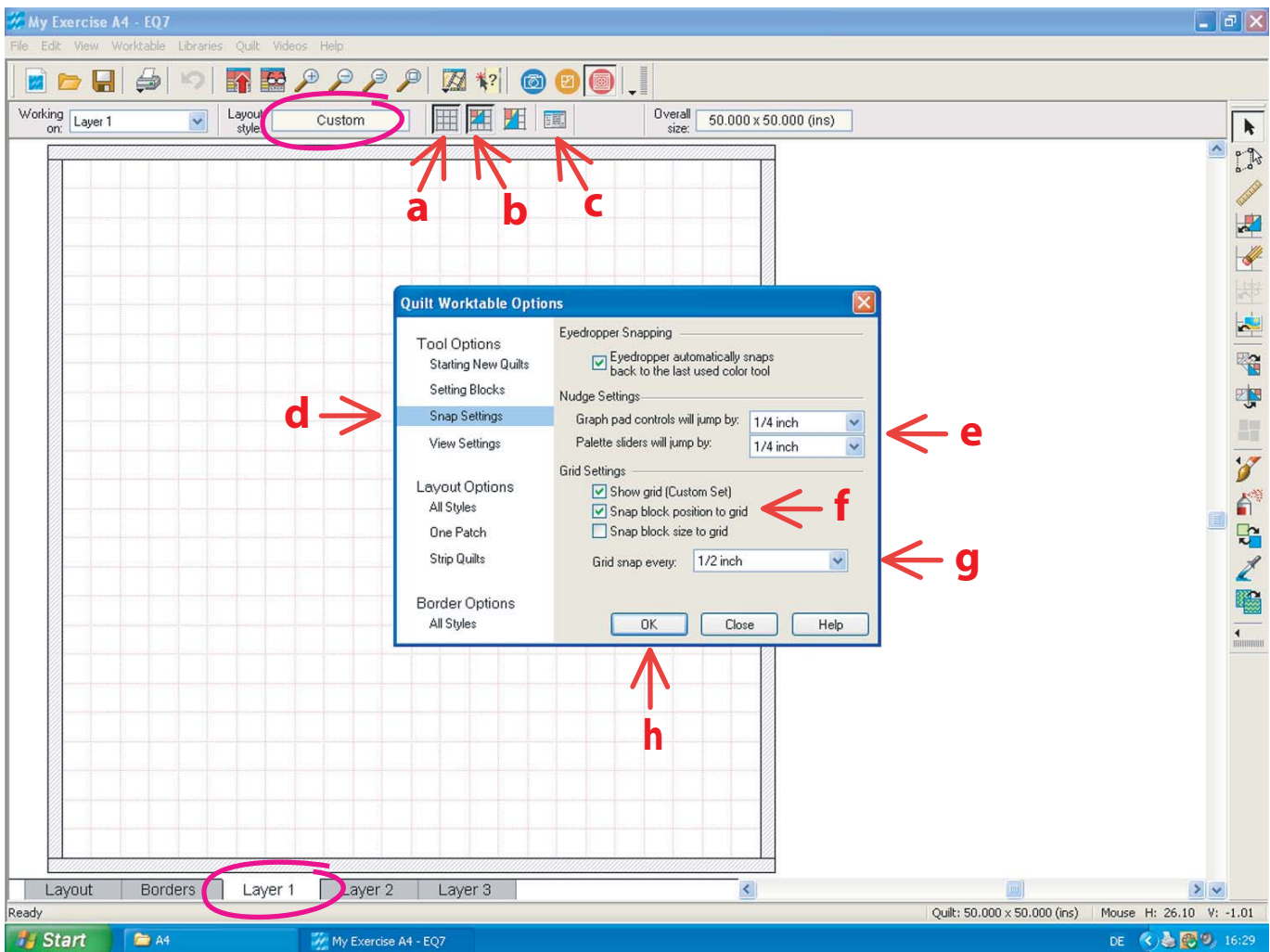
click **d** on **Snap Settings**

change/keep **e** Snap settings every 1/4 inch

keep **f** checkboxes

change/keep **g** Grid snap every 1/2 inch

click **h** on **OK**



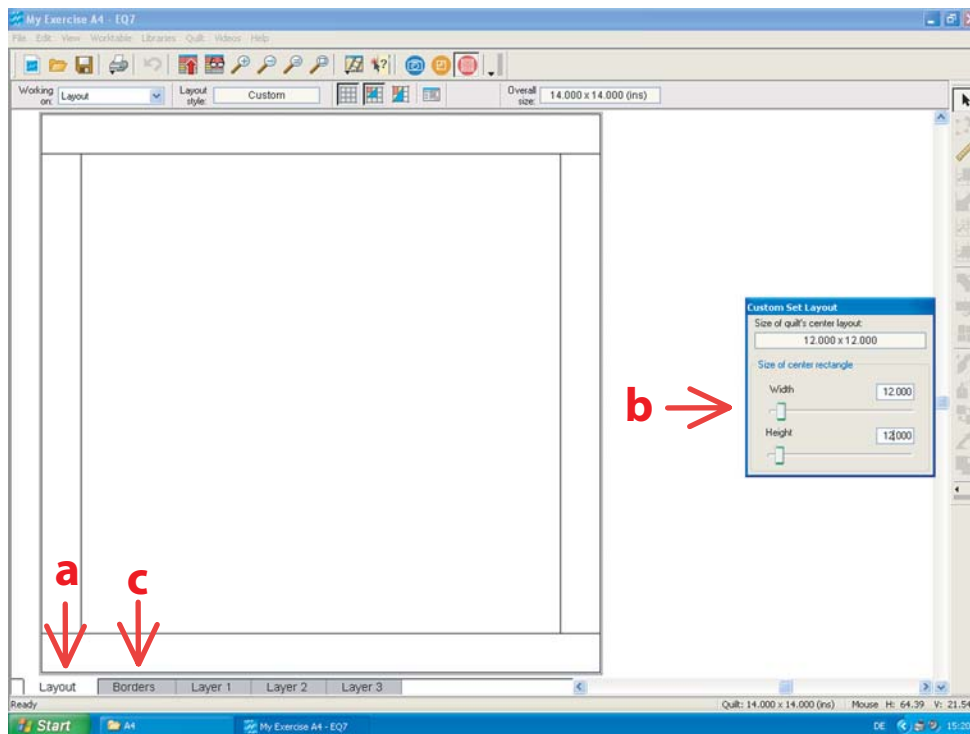
2.2. Layout Size

Reference: EQ7 Manual Chapter5, Page 92...

click **a** on **Layout Tab**

change/keep **b** **Width and Height** 12 inch

click **c** on **Borders** tab

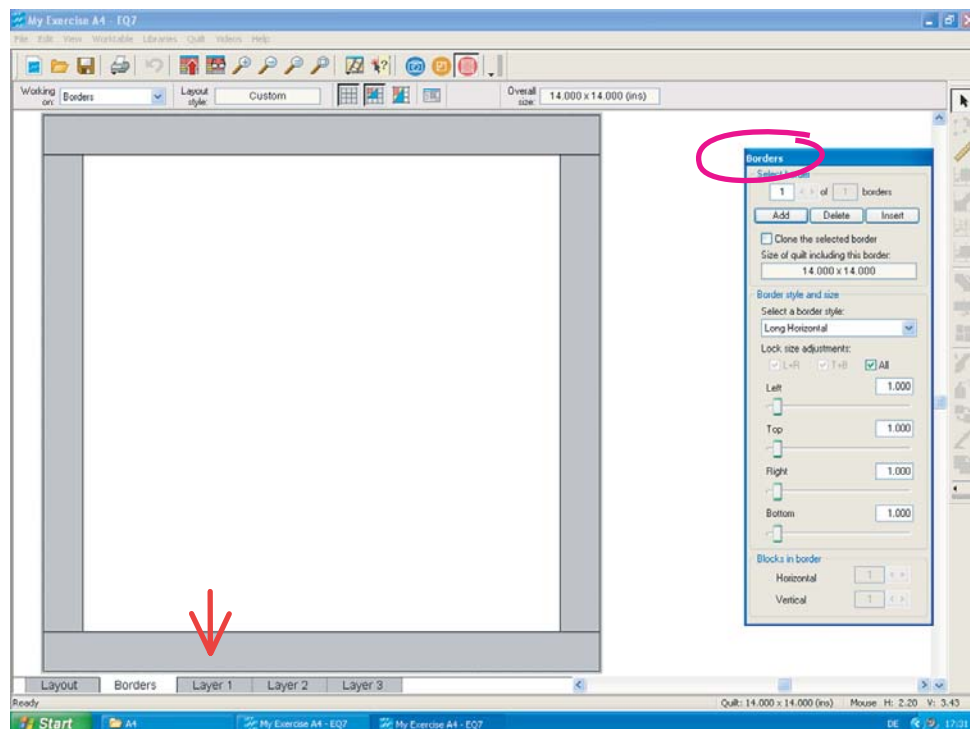


2.3. Work on Borders

Reference: Lesson 3 and EQ7 Manual Chapter5, Page 116...117

Follow the Steps of Making a Border

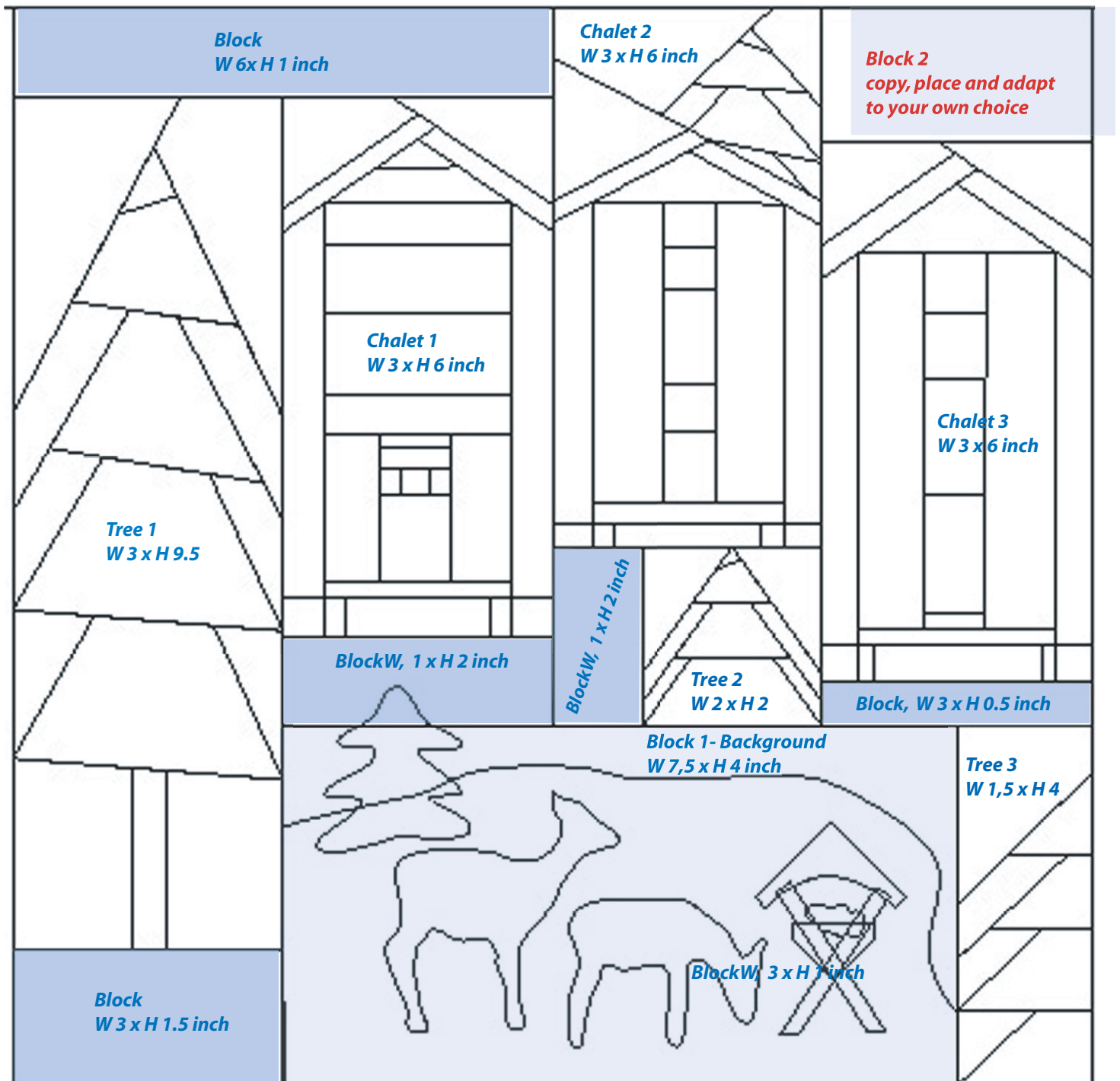
click on **Layout 1** tab



Printout with manually added Block Names and Dimensions

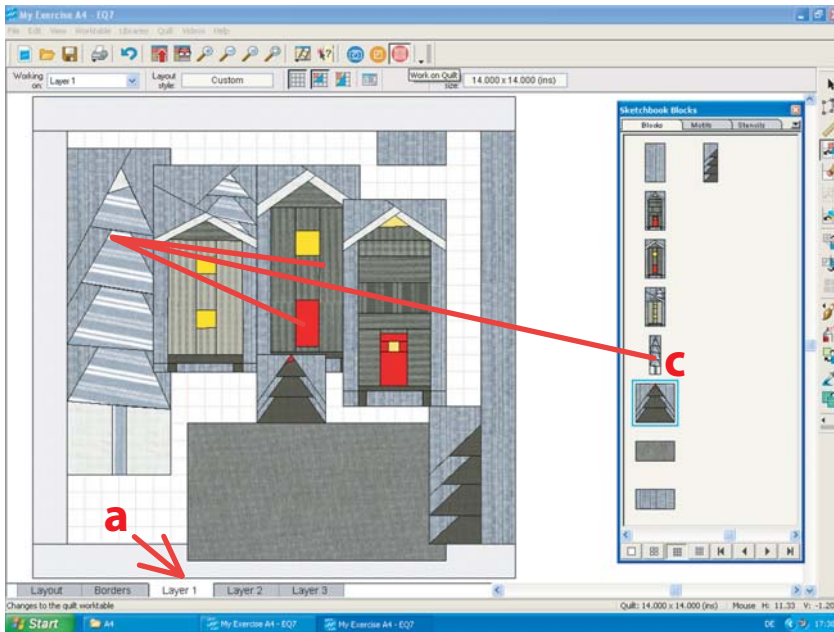
A help for Beginners to do the Original Layout.

To be used with **3.1 Moving and Resizing Blocks** on pages 5 and 6



3. Setting Blocks and Motifs

Reference: Lesson 3 and EQ7 Manual Chapter5, Page 96...



b
My Concept, for playing with Blocks, Sizes and Positions. I recommend it also for Beginners.

click **a** on **Layer 1** tab
 click **b** on **Set Block** tool

c drag **all the designs** from the **palette** onto the quilt.
 Blocks may overlap and snap to to grid settings.

3.1 Moving, and resizing Blocks

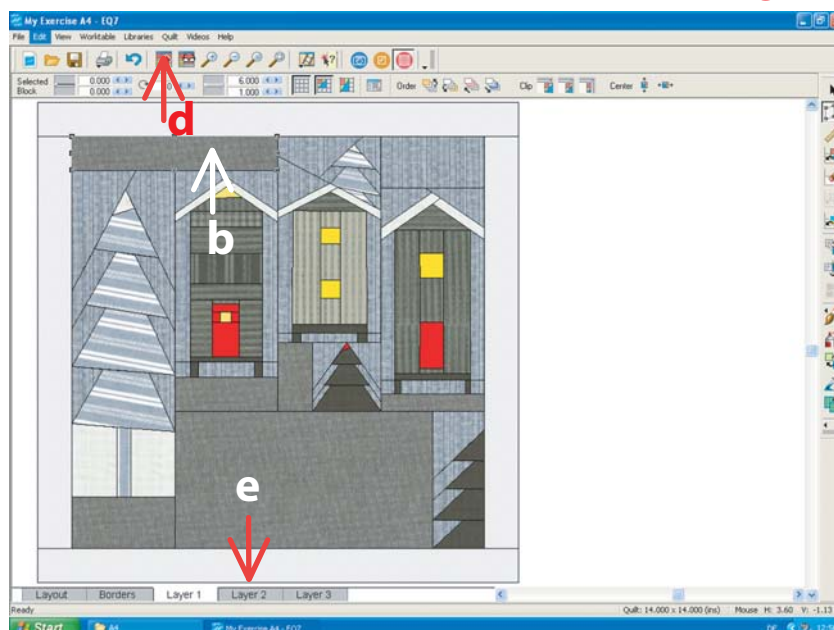
Reference: EQ7 Manual Chapter5, Page 104-105

click **a** on **Adjust** tool

click **b** on **Block** on the quilt

click **c** on the arrows next to the width and height numbers and set to 6 and 1 inch

The Graph Pad will also show the distance from the top and left corner of the blocks to the quilts top-left corner.



The Quilt Printout, Page 4, with Block Names and dimensions could be useful.

When all Blocks have the desired size and position

click **d** on **Add to Sketchbook**
 click **e** on **Layout 2**



3.2 Setting Motifs

Reference: EQ7 Manual Chapter5, Page 96

click **a** on **Set Block tool**

click **b** on **Motifs** on **Sketchbook palette**

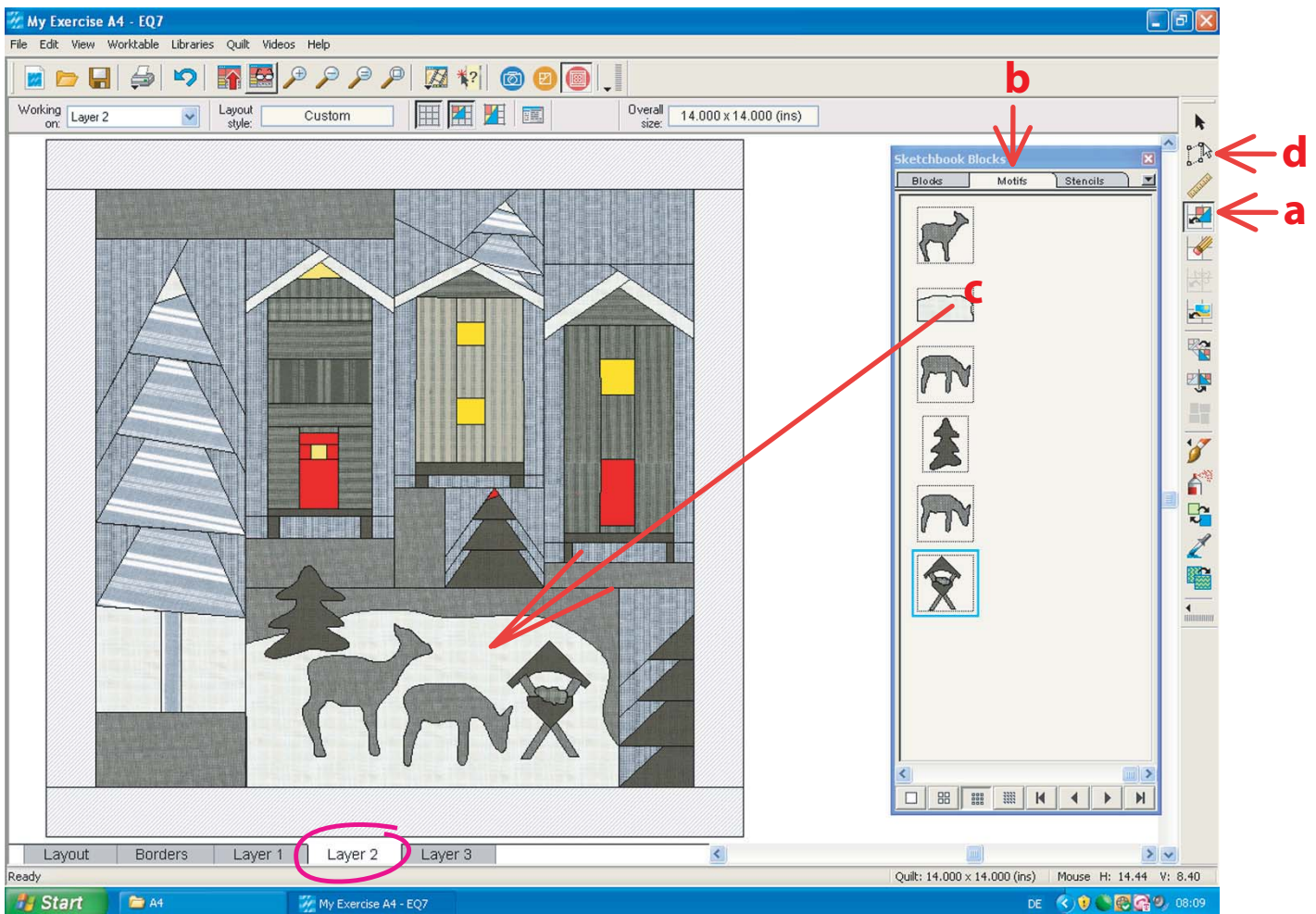
c drag **Motifs** from the palette onto the quilt, start with the *Background Block (snow)*.

click **d** on **Adjust tool** to move or resize the motifs

Do not forget to Save the Quilt and the Project



Note: Motifs can only be placed on **Layer 2**



Next: Lesson 5

Make your first Foundation Piecing Blocks

- Tips for using tools
- Use guides for changing existing designs.
- and more

